

Regional Infrastructure Pty Ltd

# **RLX Pollution Incident Response Management Plan**

Central Tablelands Livestock Exchange (CTLX)  
Tamworth Regional Livestock Exchange (TRLX)  
Inverell Regional Livestock Exchange (IRLX)

Last Updated: 1 August 2013

## Table of Contents

1. Purpose .....	2
2. Scope .....	2
3. Distribution Policy .....	2
4. Definition of a Pollution Incident .....	2
5. Duty to report a pollution incident .....	2
6. Regulatory Authorities to be notified.....	3
7. Notification .....	4
8. Notification Responsibilities .....	4
9. Community and stakeholder notification.....	4
10. Incident response actions .....	5
11. Hazards and Pre-emptive actions.....	5
12. Safety Equipment .....	6
13. Prepare, test, maintain .....	6
14. Staff training .....	6
Appendix 1   Incident and risk assessment – likelihood of hazards .....	7
Appendix 2   Inventory of pollutants .....	8
Appendix 3   Maps .....	17
Appendix 4   Testing Plans.....	20
Appendix 5   Pollution Incident Report Card.....	21

## 1. Purpose

This Pollution Incident Response Management Plan (PIRMP) has been developed to comply with requirements by the Protection of the Environment Legislation Amendment Act 2011 (POELA Act) to prepare and implement a pollution incident response management plan.

The objectives of this plan are to ensure the timely communication of a pollution incident to all relevant groups and individuals to minimise and control the risk of a pollution incident occurring at RLX sites. It is also in place to ensure that the plan is properly implemented by trained staff and is regularly tested for accuracy, currency and suitability. This plan is a mandatory document on all NSW holders of an Environmental Protection License (EPL).

## 2. Scope

This document applies to all EPA licenced RLX sites; Central Tablelands Livestock Exchange (CTLX), Tamworth Regional Livestock Exchange (TRLX), and Inverell Regional Livestock Exchange (IRLX). All sites contain effluent management systems, fuel storage and chemicals for maintaining site operations, to include weed sprays and general cleaning products. This plan applies to all on site activities.

## 3. Distribution Policy

This plan will be made available to an authorised officer on request, and in the onsite office.

For information on RLX site locations please visit [www.ripl.com.au](http://www.ripl.com.au) .

## 4. Definition of a Pollution Incident

Pollution incident means an incident or set of circumstances during or as a consequence of which there is or is likely to be a leak, spill or other escape or deposit of a substance, as a result of which pollution has occurred, is occurring or is likely to occur. It includes an incident or set of circumstances in which a substance has been placed or disposed of on premises, but it does not include an incident or set of circumstances involving only the emission of any noise.

## 5. Duty to report a pollution incident

Under the Protection of the Environment Operations Act 1997, there is a duty to immediately report an incident to the EPA, NSW Health, Fire and Rescue NSW, WorkCover NSW and the local council.

Harm to the environment is material if:

- It involves actual or potential harm to the health or safety of human beings or to ecosystems that is not trivial, or
- It results in actual or potential loss or property damage of an amount, or amounts in aggregate, exceeding \$10,000 (or such other amount as is prescribed by the regulations), and
- Loss includes the reasonable costs and expenses that would be incurred in taking all reasonable and practicable measures to prevent, mitigate or make good harm to the environment.

## 6. Regulatory Authorities to be notified

EPA	131 555 or 02 9995 5555
WorkCover NSW	131 050
NSW Health	02 9391 9000
Fire and Rescue NSW	000

### 6.1. CTLX Contacts

<b>Position</b>	<b>Name</b>	<b>Telephone Contact</b>
CTLX Manager	Nathan Morris	0438 674 081
CTLX Supervisor	Louis Fardell	0417 630 035
First Aid Officers	Nathan Morris	0438 674 081
	Melise Hutchings	02 6367 3174
	Louis Fardell	0417 630 035
	John Mallard	0488 019 876
Fire Warden	Nathan Morris	0438 674 081
Night Security (Sale Nights)	Rodney Barnett	0428 970 315
<b>Emergency Contacts</b>		
	Blayney Police (not open 24 hrs)	02 6368 9599
	Orange Police (open 24 hrs)	02 6363 6399
	Blayney Fire Brigade	02 6368 2259
	Blayney Shire Council	02 6368 9618
	Bathurst (Environmental Protection and Regulation)	02 6332 7600

### 6.2. TRLX Contacts

<b>Position</b>	<b>Name</b>	<b>Telephone Contact</b>
TRLX Manager	Tim Hollis	0409 227 185
TRLX Supervisor	Dan Greenwood	0409 649 077
First Aid Officers	Tim Hollis	0409 227 185
	Dan Greenwood	0409 649 077
Fire Warden	Dan Greenwood	0409 649 077
Night Security (Sale Nights)	Bede Preston	0439 082 282
<b>Emergency Contacts</b>		
	Tamworth Police (open 24 hrs)	02 6768 2999
	Tamworth Fire Brigade	02 6762 2100
	Tamworth Regional Council	02 6767 5555
	Armidale (Environmental Protection and Regulation)	02 6773 7000

### 6.3. IRLX Contacts

<b>Position</b>	<b>Name</b>	<b>Telephone Contact</b>
IRLX Manager	Steven O'Brien	0419 901 288
First Aid Officers	Steven O'Brien	0419 901 288
	Darren Mather (on sale day)	0417 168 614
Night Security (Sale Nights)	Ben Kennedy	0409 772 833
<b>Emergency Contacts</b>		
	Inverell Police (open 24 hrs)	02 6722 0599
	Inverell Fire Brigade	02 6721 0015
	Inverell Shire Council	02 6728 8288
	Armidale (Environmental Protection and Regulation)	02 6773 7000

## **7. Notification**

Pollution incidents posing material harm to the environment must be notified to the Environmental Protection Authority.

The relevant information about a pollution incident required to be reported consists of the following:

- a) The time, date, nature, duration and location of the incident,
- b) The location of the place where pollution is occurring or is likely to occur,
- c) The nature, the estimated quantity or volume and the concentration of any pollutants involved, if known,
- d) The circumstances in which the incident occurred (including the cause of the incident, if known),
- e) The action taken or proposed to be taken to deal with the incident and any resulting pollution or threatened pollution, if known,

If the information required by c), d), or e) is not known when the initial notification is made but becomes known afterwards, that information must be notified to the relevant authorities immediately after it becomes known.

## **8. Notification Responsibilities**

The following people have a duty to notify a pollution incident occurring that causes or threatens material harm to the environment:

- The person carrying on activity
- An employee engaged in carrying on the activity
- The employer carrying on the activity
- The occupier of the premises where the incident occurs

An incident that does not require notification if the person is aware that the incident has already come to the notice of each person or authority required to be notified, or if the incident is an ordinary result of action required to be taken to comply with an EPL, or environmental protection notice.

## **9. Community and stakeholder notification**

All community and stakeholder notifications will be undertaken in line with this document and the Environmental Protection License.

- Neighbouring residents will be notified by phone or doorknocking.
- Livestock agents and transporters will be notified by email or phone, so they can inform their clients, if the pollution incident will affect the use of the saleyards.

## 10. Incident response actions

Type of emergency	Preparation for emergency	Response to the emergency
Minor spill of hazardous substances ( < 20 L )	Awareness training (see Section 14. Staff Training). MSDS on site for all materials and kept up to date.	Report spills immediately to the Site Manager, and relevant authorities (see Section 6. Authorities to be notified). Attempt to contain spill. Site Managers and staff to coordinate the response and clean-up of the hazardous substance.
Major spill of hazardous substance ( > 20 L )	Awareness training (see Section 14. Staff Training). MSDS on site for all materials and kept up to date. Emergency contact numbers displayed on site.	Report spills immediately to the Site Manager, and relevant authorities (see Section 6. Authorities to be notified). Attempt to contain spill. Site Managers and staff to coordinate the response and clean-up of the hazardous substance. Where appropriate, evacuation procedure to be implemented until hazard is contained. Notify emergency services.
Flood	Awareness training (see Section 14. Staff Training). Monitor flood warnings Maintain high standards for erosion and effluent sediment controls.	All chemicals, fuels and other hazardous substances to be secured in containers away from flood affected areas. Monitor erosion of sediment ponds.

## 11. Hazards and Pre-emptive actions

The following are pre-emptive actions to reduce hazards at RLX sites:

- Staff inductions
- Weekly staff meetings
- Saleyard Advisory Meetings
- Regular monitoring of pollution hazards
- Staff training programs
- Annual Safety Audit
- Use of MSDS information
- Environmental monitoring undertaken by Geolyse and reported monthly on the RIPL website ([www.ripl.com.au](http://www.ripl.com.au)).

An incident and hazard risk assessment of the likelihood of hazards is enclosed in Appendix 1.

For the full list of pollutants kept on site, see Appendix 2.

## 12. Safety Equipment

Safety equipment located on site includes:

- Fire extinguishers
- First Aid Equipment
- MSDS's kept in maintenance shed/office (A register is being compiled of dangerous goods, a copy is to be kept in the office and maintenance shed)
- PPE located in maintenance shed/office

Audit of all safety equipment and controls is undertaken annually. Next scheduled audit is November 2012.

See Appendix 3 for site maps showing locations of evacuation assembly areas, fire extinguishers and first aid equipment.

## 13. Prepare, test, maintain

After preparation of this PIRMP, it is to be tested to ensure that the information included in this plan is accurate and up to date, so that it can be implemented in a workable and effective manner.

Testing will be carried out routinely at least once every 12 months (See Appendix 4 for scheduled test dates), and within one (1) month of any pollution incident occurring to assess whether the information included in the plan is accurate and up to date (see Appendix 5 for the Pollution incident report card, which details any pollution incidents that have occurred).

## 14. Staff training

Staff training is recorded in the monthly Management Reports, quarterly Management Reports and kept on site. Site Managers are required to undertake ChemCert Australia Chemical Accreditation training.

As part of the Site Safety Induction systems, all workers on site are provided with information on possible pollutants and the procedure to prevent hazards (Details on the Site Safety Inductions can be found in the RLX Saleyard Occupational Health and Safety Management System Manual).

## Appendix 1 | Incident and risk assessment – likelihood of hazards

Hazard	Details	Likelihood	Controls
Chemical Spill	Environmental contamination Injured personnel	Low (iii)	Safe storage and use of chemicals Purchase spill kits
Contaminated runoff	Discharge to neighbouring properties Ground water contamination	High (iv)	Regular audit, inspection and corrective actions
Noise	Complaints by neighbours	Low (iv)	Environmental Protection License
Fuel	Spills, Leaks	Medium (iii)	MSDS

Likelihood of hazards score is based on the RLX Saleyard Occupational Health and Safety Management System, Appendix 22a Risk Assessment Tools, used to assess the effectiveness of existing risk treatments or controls in place, which are then taken into account when determining the consequence, likelihood and therefore the level of residual risk.



## Appendix 2 | Inventory of pollutants

Chemical Names As at 1 September 2012	Location	Active Ingredient	Site	MSDS Required
Adhesive Lubricant			IRLX	
Aero guard	Office		IRLX	
Air Tool Oil	Scale house		TRLX	
Ajax Floor Cleaner	Canteen		TRLX	
Ajax Spray & White	Bathroom Cupboard Canteen		IRLX TRLX CTLX	Yes
Alexis Stockmark Fluid X 5			IRLX	
All Bull Cattle Paint			TRLX CTLX	
Ammoniated Floor Cleaner			IRLX	
Active O	Cleaner	Not hazardous	CTLX	Yes
Anti-Corrosive Structural Primer			IRLX	

Chemical Names As at 1 September 2012	Location	Active Ingredient	Site	MSDS Required
Anti-Freeze – Ant Boll Coolant	Container		TRLX IRLX CTLX	
Auto dish mate	Kitchen		CTLX	Yes
BC-9 Cleaner Disinfectant	Scale house		TRLX	
Bindi & Clover Weeder (500m)			IRLX	
Blackboard Paint			IRLX CTLX	
Bleach	Canteen		TRLX CTLX	Yes
Brake Fluid	Maintenance Shed		TRLX	
Brake water 700	Maintenance Shed		TRLX	
Buttress (Selective Herbicide)			IRLX	
Cable Lube	Maintenance Shed		TRLX	
Busta	Cleaner	Cream cleanser not hazardous	CTLX	Yes
Cattle marking paint	Paint shed		CTLX	Yes

Chemical Names As at 1 September 2012	Location	Active Ingredient	Site	MSDS Required
Castrol GTx2 20w-50 (1 x 2)			IRLX	
Cat Pry Film Lubricant			IRLX	
Chemwet 100 x 5L			IRLX	
Diesel 2 x 44 Gallon drums Low sulphur Highland Diesel Ultra Low Sulfur			IRLX CTLX CTLX CTLX	Yes Yes Yes
Diurex (Group C Herbicide)			IRLX	
Domestic Cleaner	Cleaning Room		TRLX	
Dupont Brush Off (200g)			IRLX	
Drain Cleaner (B&G)	Cleaner	Sodium hydroxide, Aluminium, Inorganic salts	CTLX	Yes
Dishwashing liquid(Advantage)	Kitchen		CTLX	Yes
E. Ezy Glide			IRLX	
Effluent Ponds	Near sheep and cattle pavilion  Near Truck wash facilities		CTLX TRLX IRLX	

Chemical Names As at 1 September 2012	Location	Active Ingredient	Site	MSDS Required
Enamel Thinner	Maintenance Shed		TRLX	
Eucalyptus Disinfectant	Kitchen cupboard		IRLX	
Fence & Gutter Paint			IRLX	
Flux Paste - Easyflo	Maintenance Shed		TRLX	
Fly Spray 400g	Canteen		TRLX	
Flystrike Powder	Kitchen cupboard		IRLX	
For Earth BIO (20lx8)	Kitchen cupboard		IRLX	
GALMATE – Metal Protector Spray Paint Primer FTW Polymers & fluids			CTLX	Yes
Glass & Chrome Cleaner	Scale house		TRLX IRLX	
Status Glass Cleaner	Cleaner		CTLX	Yes
Grill Cleaner	Canteen		TRLX	
Hand Cleaner	Canteen/Scale house/Livestock Office		TRLX	
Hydraulic/Hydrostatic Fluid (Bobcat 20L)			IRLX	

Chemical Names As at 1 September 2012	Location	Active Ingredient	Site	MSDS Required
Inox Mx3	Maintenance Shed		IRLX TRLX	
Jif Bathroom Cream	Bathroom cupboard		IRLX	
Kamba M ( Herb) 5L	Maintenance Shed		TRLX	Yes
Ken – Amine 625 (2L)			IRLX	
Ken – Up 450CT (20L)			IRLX	
K-San Cleaner	Canteen		TRLX	
Lanolin Type A	Work shop		CTLX	Yes
Liplex EPZ			IRLX	
Lontrel Herbicide (1L)			IRLX	
Lubricant Soluble	Workshop		CTLX	Yes (2003)
Maybond			IRLX	
Methylated Spirits	Canteen		IRLX TRLX	
Mineral Turpentine	Maintenance Shed		IRLX CTLX TRLX	Yes

Chemical Names As at 1 September 2012	Location	Active Ingredient	Site	MSDS Required
Multi G – Transmission Oil 3 x 20L	Container		TRLX	
Oxide Primer			IRLX	
Oven cleaner	Kitchen		CTLX	Yes
Paint ( Dulux water based)	Paint shed		CTLX	Yes
Pineo Cleaner Antibacterial Kitchen Cleaner	Kitchen		CTLX	Yes
Power Cleaner/Pineo Clean			IRLX	
Power force Window and glass cleaner	Kitchen		CTLX	Yes
Protecta Bodyguard 30+ Sunscreen	Managers Office/Livestock Office		IRLX TRLX	
Protek Primer Fluid & Cement Fluid			IRLX	
Quick Bayt			IRLX	
Quikset Concrete			IRLX	
Racumin			IRLX	

Chemical Names As at 1 September 2012	Location	Active Ingredient	Site	MSDS Required
Raid (Insecticide)			IRLX	
Ratsak			IRLX	
Roundup 360 Group M (Herbicide active)		<i>constituent 360g/l Glyphosate</i>	CTLX	Yes
Rust Buster			IRLX	
Rustfighter 215			IRLX	
Rustguard Epoxy Enamel	Workshop		CTLX	Yes
Rose refresh	Cleaner	Soap	CTLX	Yes
Silicone Sealant			IRLX	
Simple green All Purpose Cleaner			IRLX	
Solaguard (Wattyl) 4LTR	Maintenance Shed		TRLX	
Solvent Cement Type P	Maintenance Shed		TRLX	
Spinnaker 700 WDG (2KG)			IRLX	

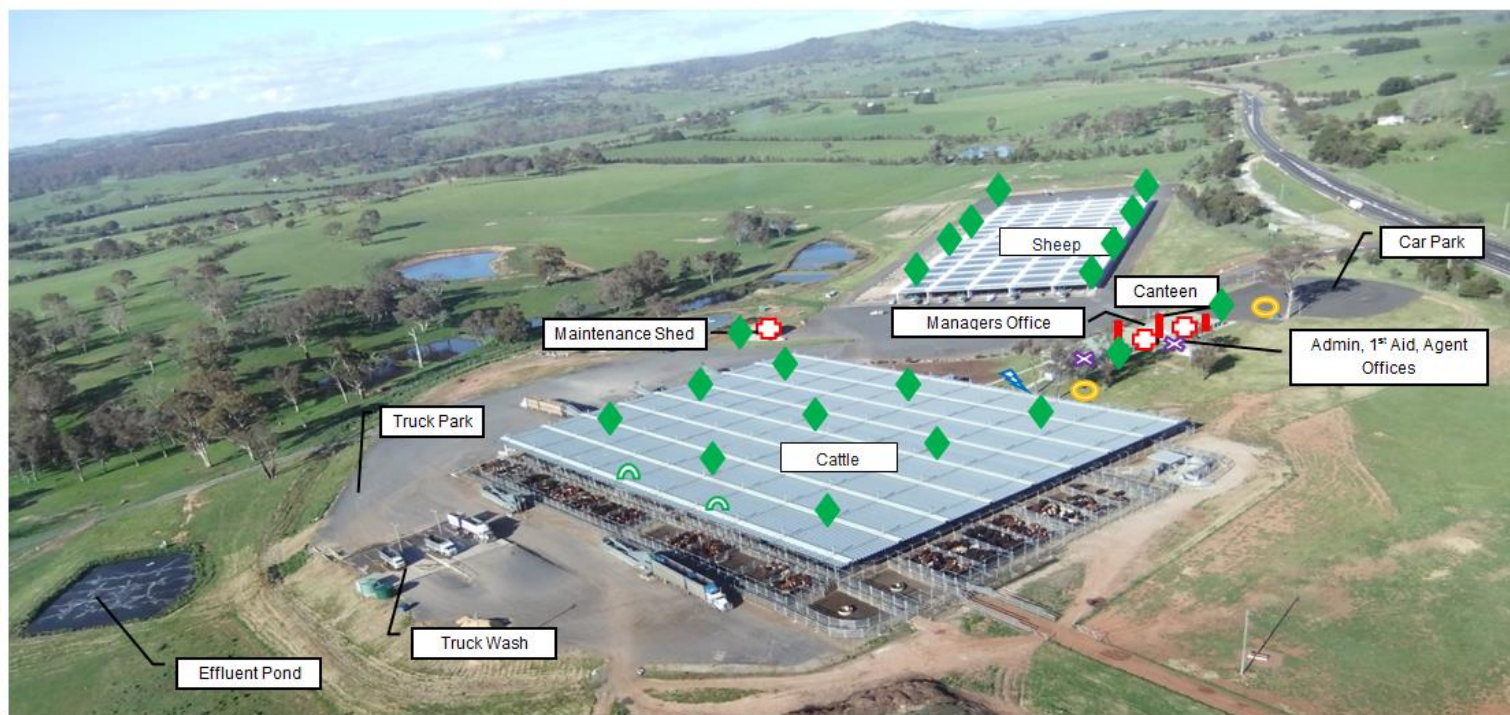
Chemical Names As at 1 September 2012	Location	Active Ingredient	Site	MSDS Required
Spray paint	Scale House/Livestock Office		TRLX	
Strarane Advance (Herb) 1LTR	Maintenance Shed	333g/l Fluroxypyr	TRLX	Yes
Striker Herbicide (5L)			IRLX	
Sugar Soap Cleaner	Canteen		TRLX CTLX	Yes
SuperDraulic 46 20L x 2	Container		TRLX	
Toilet Cleaner	Bathroom cupboard		IRLX	
Ultra Colour Marking Paint			IRLX	
Ultra Colour Marking Paint	Maintenance Shed		TRLX	
Unleaded 2 Stroke Petrol (1 x 10L)			IRLX	
Unleaded Petrol (2x20L) Unleaded 2 Stroke Petrol (1x10L)	Paint Shed Workshop Workshop		IRLX CTLX TRLX CTLX	Yes Yes
Uptake Spraying Oil (20L)			IRLX	



Chemical Names As at 1 September 2012	Location	Active Ingredient	Site	MSDS Required
Versadet	Cleaner	Water based general cleaner	CTLX	Yes
WD-40	Maintenance Shed		IRLX TRLX	
Weedmaster Duo (Herb) 5L	Maintenance Shed	360g/l Glyphosate	TRLX	Yes
White Lithium grease aerosol	Workshop	LPG, MINERAL OIL, Zinc OXIDE, isohexane	CTLX	Yes
White board cleaner	Office	Propan, benzyl alkaldimethyl	CTLX	Yes
Window wash	Cleaner	Not hazardous	CTLX	Yes
Windex	Kitchen		CTLX	Yes

## Appendix 3 | Maps

### CENTRAL TABLELANDS LIVESTOCK EXCHANGE



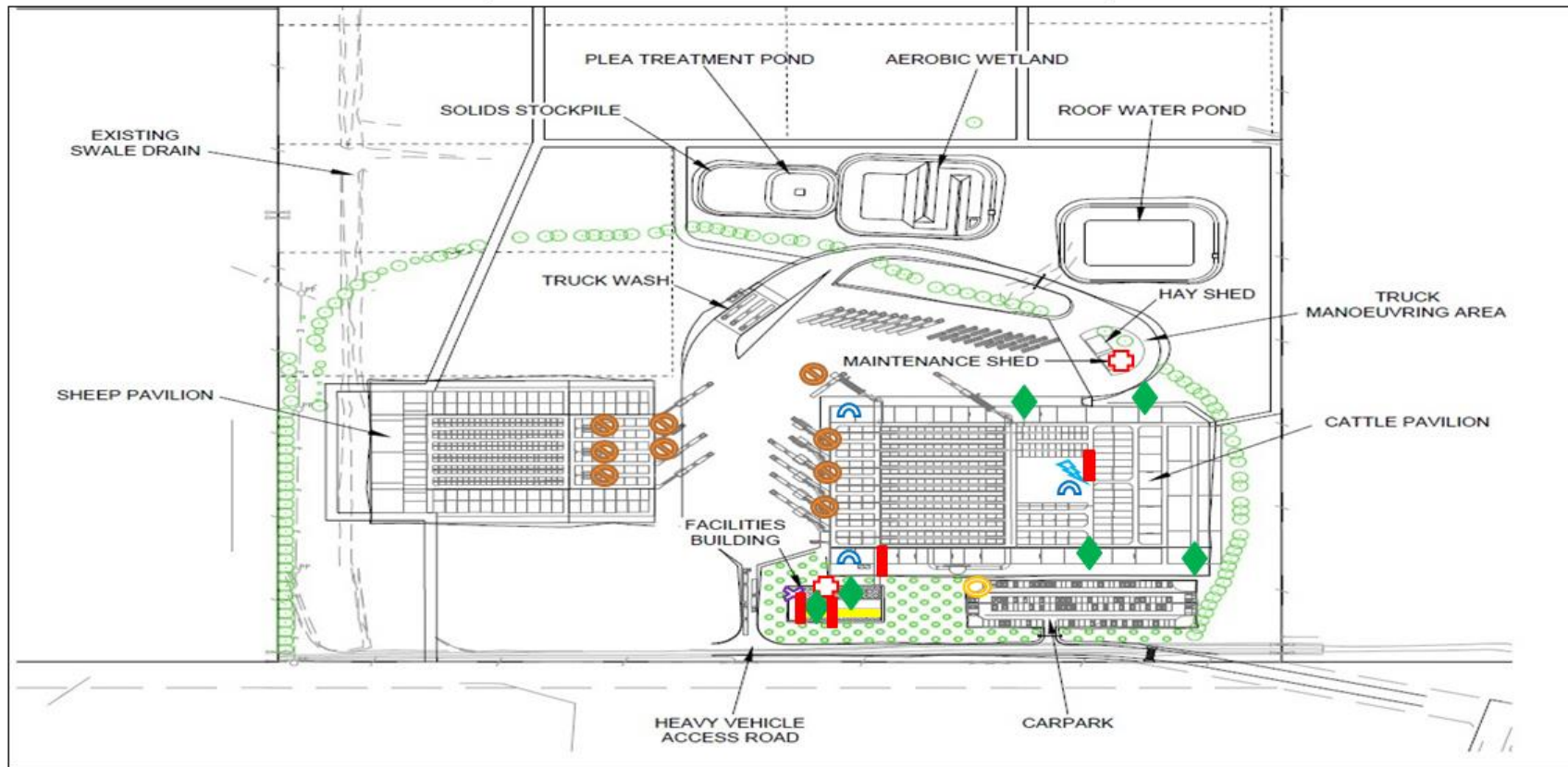
#### LEGEND:

 First Aid Kit location  Showers/Toilets  Assembly Area  Cattle Crush  Agents Office  Compressor  Fire Hose  Fire Extinguisher

#### NOTE:

WHEN YOU HEAR THE WORDS "**EMERGENCY, EMERGENCY, EMERGENCY**" ALL OCCUPANTS **MUST** CEASE ACTIVITIES, MAKE EQUIPMENT AND LIVESTOCK SAFE, MOVE DIRECTLY TO THE ASSEMBLY AREA AND FOLLOW INSTRUCTIONS FROM EITHER THE FIRE WARDEN/POLICE OR SITE MANAGER.

## TAMWORTH REGIONAL LIVESTOCK EXCHANGE



**LEGEND:**

- First Aid Kit location
- Showers/Toilets
- Assembly Area
- Cattle Crush
- Agents Office
- Compressor
- Fire Hose
- Fire Extinguisher
- Water Hose

**NOTE:** WHEN YOU HEAR THE WORDS **"EMERGENCY, EMERGENCY, EMERGENCY"** ALL OCCUPANTS **MUST** CEASE ACTIVITIES, MAKE EQUIPMENT AND LIVESTOCK SAFE, MOVE DIRECTLY TO THE ASSEMBLY AREA AND FOLLOW INSTRUCTIONS FROM EITHER THE FIRE WARDEN/POLICE OR SITE MANAGER.

## INVERELL REGIONAL LIVESTOCK EXCHANGE



**LEGEND:**

- First Aid Kit location
- Showers/Toilets
- Assembly Area
- Cattle Crush
- Agents Office
- Compressor
- Fire Hose
- Fire Extinguisher
- Bulk Scale

**NOTE:**

WHEN YOU HEAR THE WORDS "EMERGENCY, EMERGENCY, EMERGENCY" **ALL** OCCUPANTS MUST CEASE ACTIVITIES, MAKE EQUIPMENT AND LIVESTOCK SAFE, MOVE DIRECTLY TO THE ASSEMBLY AREA AND FOLLOW INSTRUCTIONS FROM EITHER THE FIRE WARDEN/POLICE OR SITE MANAGER.