



Agricultural Asset Management Investment Group (AAMIG)

RLX Pollution Incident Response Management Plan

Central Tablelands Livestock Exchange (CTLX)
Tamworth Regional Livestock Exchange (TRLX)
Inverell Regional Livestock Exchange (IRLX)
Hunter Regional Livestock Exchange (HRLX)

Last Updated: 10 August 2021

Table of Contents

1. Purpose	2
1. Scope.....	2
2. Distribution Policy.....	2
3. Definition of a Pollution Incident	2
4. Duty to report a pollution incident	2
5. Pollution Incident Contact details.....	3
6. Notification	4
7. Notification Responsibilities	5
8. Community and stakeholder notification	5
9. Incident response actions.....	6
10. Pre-emptive actions	7
11. Safety Equipment.....	7
12. PIRMP testing	7
13. Staff training.....	7
Appendix 1 Inventory of pollutants.....	8
Appendix 2 Site Maps	

1. Purpose

This Pollution Incident Response Management Plan (PIRMP) has been developed to comply with requirements by the Protection of the Environment Legislation Amendment Act 2011 (POELA Act) to prepare and implement a pollution incident response management plan.

The objectives of this plan are to ensure the timely communication of a pollution incident to all relevant groups and individuals to minimise and control the risk of a pollution incident occurring at the Regional Livestock Exchange (RLX) sites. It is also in place to ensure that the plan is properly implemented by trained staff and is regularly tested for accuracy, currency and suitability.

1. Scope

This document applies to the following RLX sites:

- Central Tablelands Livestock Exchange (CTLX)
- Tamworth Regional Livestock Exchange (TRLX)
- Inverell Regional Livestock Exchange (IRLX)
- Hunter Regional Livestock Exchange (HRLX)

All sites have effluent management systems, stored fuel and chemicals which are used for site operational activities. This plan applies to all on-site activities.

2. Distribution Policy

This plan will be made available to an authorised officer on request, a copy will be held at each of the RLX sites listed above and also published on each site's website. For information on RLX site locations please visit: www.rlx.com.au

3. Definition of a Pollution Incident

Pollution incident means an incident of set of circumstance during or as a consequence of which there is or is likely to be a leak, spill or other escape or deposit of a substance, as a result of which pollution has occurred, is occurring or is likely to occur. It includes an incident or set of circumstances in which a substance has been placed or disposed of on premises, but it does not include an incident or set of circumstances involving only the emission of any noise.

4. Duty to report a pollution incident

Under the Protection of the Environment Operations Act 1997, there is a duty to immediately report an incident to the EPA, NSW Health, Fire and Rescue NSW, WorkCover NSW and the local council.

Harm to the environment is material if:

- It involves actual or potential harm to the health or safety of human beings or to ecosystems that is not trivial, or
- It results in actual or potential loss or property damage of an amount, or amounts in aggregate, exceeding \$10,000 (or such other amount as is prescribed by the regulations), and
- Loss includes the reasonable costs and expenses that would be incurred in taking all reasonable and practicable measures to prevent, mitigate or make good harm to the environment.

5. Pollution Incident Contact details

Regulatory Authorities to be notified:

Authority	Telephone Contact
EPA	131 555 or 02 9995 5555
WorkCover NSW	131 050
NSW Health	02 9391 9000
Fire and Rescue NSW	000

Site Contacts:

CTLX

Position	Name	Telephone Contact
CTLX Manager	Brock Syphers	0436 916 702
CTLX Supervisor	Michael Burke	0437 831 222
First Aid Officers	Brock Syphers	0409 577 018
	Jodie Molloy	02 6367 3086
Fire Warden	Brock Syphers	0409 577 018
Emergency Contacts		
Blayney Police Station (not open 24 hrs)		02 6368 9599
Orange Police Station (open 24 hrs)		02 6363 6399
Blayney Fire Brigade		02 6368 2259
Blayney Shire Council		02 6368 9618
EPA Bathurst Office		02 6332 7600

TRLX

Position	Name	Telephone Contact
TRLX Manager	Stephen Davidge	0436 928 063
Maintenance Supervisor	Neil Faint	0428 241 022
TRLX Supervisor	Ethan Watts	0409 649 077
TRLX Supervisor	Jodie Poole	0447 020 667
First Aid Officer 1	Karen Chaplin	0409 595 123
First Aid Officer 2	Jodie Poole	0447 020 667
Fire Warden	Ethan Watts	0409 649 077
Agent's Representative	Scott Newberry	0447 624 440
Transporter's Representative	Mick Maloney	(02) 6768 7388
Emergency Contacts		
Tamworth Police Station		02 6768 2999
Tamworth Fire Dept		02 6762 2100
Tamworth Regional Council		02 6767 5555
EPA Armidale Office		02 6773 7000

Site contacts (cont.)

IRLX

Position	Name	Telephone Contact
IRLX Manager	Steven O'Brien	0419 901 288
IRLX Assistant Manager	Rick Kernake	0418 245 584
First Aid Officer 1	Steven O'Brien	0419 901 288
First Aid Officer 2	Michelle Mair	04 6722 1750
Fire Warden	Steven O'Brien	0419 901 288
Emergency Contacts		
Inverell Police Station		02 6722 0599
Inverell Fire Brigade		02 6721 0015
Inverell Shire Council		02 6728 8288
EPA Armidale Office		02 6773 7000

HRLX

Position	Name	Telephone Contact
HRLX Manager	Jayden Reid	0498 333238
First Aid Officer	Jayden Reid	0498 333238
Fire Warden	Jayden Reid	0498 333238
Emergency Contacts		
Singleton Police Station		02 6578 7499
Singleton Fire Brigade		02 6572 1465
Singleton Council		02 6578 7290
EPA Newcastle Office		02 6773 7000

6. Notification

Pollution incidents posing material harm to the environment must be notified to the Environmental Protection Authority.

The relevant information about a pollution incident required to be reported consists of the following:

- a) The time, date, nature, duration and location of the incident,
- b) The location of the place where pollution is occurring or is likely to occur,
- c) The nature, the estimated quantity or volume and the concentration of any pollutants involved, if known,
- d) The circumstances in which the incident occurred (including the cause of the incident, if known),
- e) The action taken or proposed to be taken to deal with the incident and any resulting pollution or threatened pollution, if known,

If the information required by c), d), or e) is not known when the initial notification is made but becomes known afterwards, that information must be notified to the relevant authorities immediately after it becomes known.

7. Notification Responsibilities

The following people have a duty to notify a pollution incident occurring that causes or threatens material harm to the environment:

- The person carrying on activity
- An employee engaged in carrying on the activity
- The employer carrying on the activity
- The occupier of the premises where the incident occurs

An incident does not require notification, if the person is aware that the incident has already come to the notice of each person or authority required to be notified, or if the incident is an ordinary result of action required to be taken to comply with an EPL, or environmental protection notice.

8. Community and stakeholder notification

All community and stakeholder notifications will be undertaken in line with this document and the Environmental Protection License.

- Neighbouring residents will be notified by phone or door knocking.
- Livestock agents and transporters will be notified by email or phone, so they can inform their clients, if the pollution incident will affect the use of the saleyards.

9. Incident response actions

Type of incident	Preparation	Response actions
Minor spill of potential pollution substance(< 20 L)	<p>Awareness training for team members.</p> <p>MSDS on site for all materials and kept up to date.</p>	<p>Report spills immediately to the Site Manager, and relevant authorities where required (refer Section 5 & 6).</p> <p>Only attempt to contain the spill if safe to do so.</p> <p>Site Managers and staff to coordinate the response and clean-up of the spill.</p> <p>Monitoring and follow up reporting to be carried out as per EPL License conditions.</p>
Major spill of potential pollution substance(> 20 L)	<p>Awareness training for team members.</p> <p>MSDS on site for all materials and kept up to date.</p> <p>Emergency contact details displayed on site.</p>	<p>Report spills immediately to the Site Manager, and relevant authorities (refer Section 5 & 6).</p> <p>Notify appropriate emergency services.</p> <p>Where appropriate, evacuation procedure to be implemented until pollution substance is contained.</p> <p>Only attempt to contain the spill if safe to do so.</p> <p>Site Managers to coordinate the response and clean-up of the spill.</p> <p>Monitoring and follow up reporting to be carried out as per EPL License conditions.</p>
Flood	<p>Awareness training for team members.</p> <p>Monitor weather conditions and flood warnings.</p>	<p>All chemicals and fuels are stored in secured containers away from potential flood affected areas.</p> <p>Effluent pond levels will be managed where possible to reduce the risk of potential overflow events and minimise impacts.</p> <p>Monitoring and follow up reporting to be carried out as per EPL License conditions.</p>

10. Pre-emptive actions

The following are pre-emptive actions that are implemented at RLX sites to assist with minimising the potential for a pollution incident to occur:

- Staff inductions
- Weekly staff meetings
- Saleyard advisory meetings
- Environmental monitoring and reporting
- Staff training
- Annual safety audit
- Use of MSDS information

For the full list of chemicals kept on site, refer Appendix 1.

11. Safety Equipment

Safety equipment located on site includes:

- Fire extinguishers
- First Aid Equipment
- SDS's kept in maintenance shed and the administration office (A register has been compiled of dangerous goods, a copy is to be kept in the office and maintenance shed)
- PPE located in maintenance shed/office.

Audit of all safety equipment and controls is undertaken annually.

See Appendix 3 for site maps showing locations of evacuation assembly areas, fire extinguishers and first aid equipment.

12. PIRMP testing

The PIRMP, it is to be tested annually to ensure that the information included in this plan is accurate and up to date, and that the actions are workable and effective. The plan will be updated to reflect any changes to actions as a result of the testing and other details as required.

13. Staff training

Staff training is recorded in monthly and quarterly management reports and records are maintained on site.

As part of the RLX Site Inductions, all team members and contractors are provided with information on possible pollutants and the procedures and processes in place to manage and minimise environment ris

Appendix 1 | Inventory of pollutants

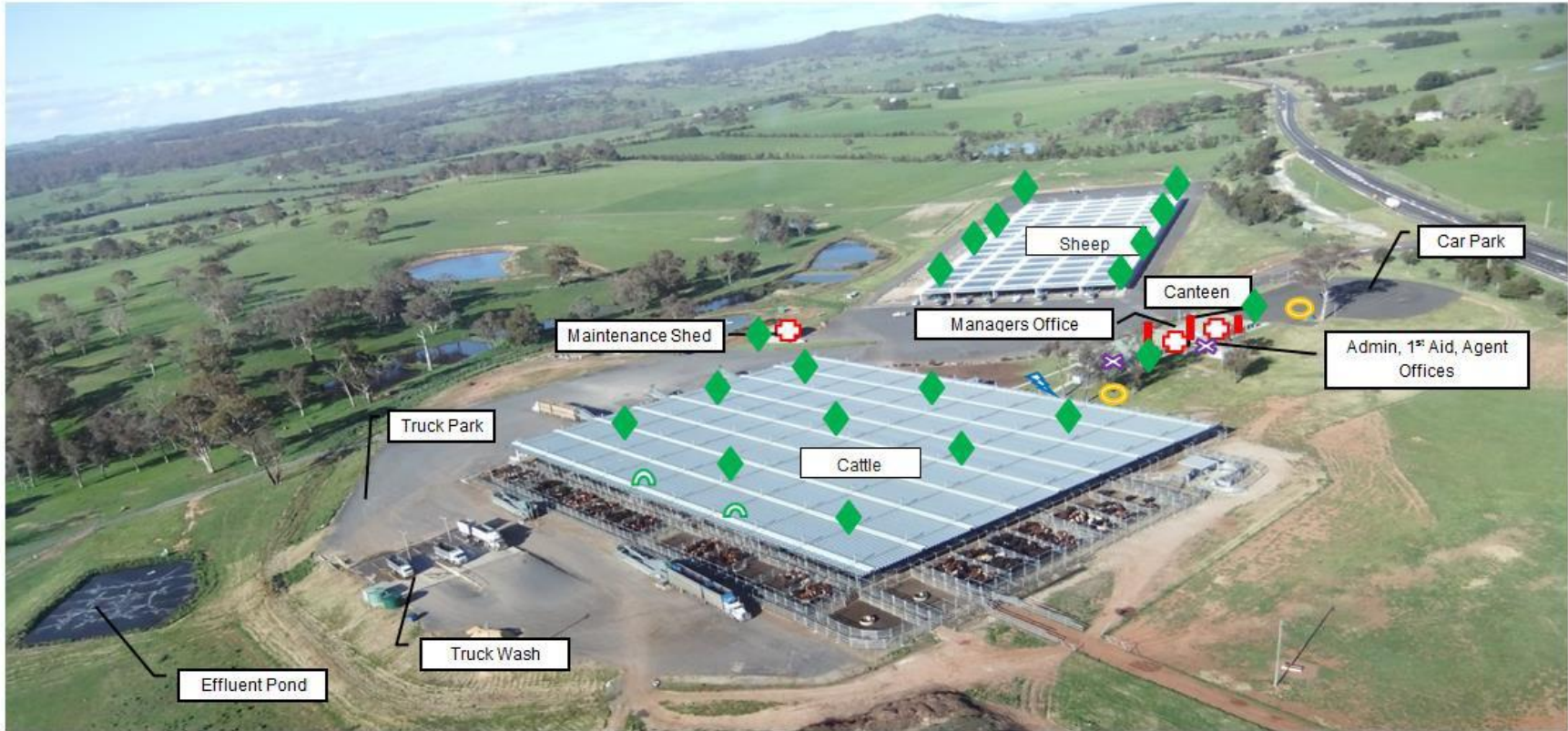
Chemical Register	Location	Site
Adhesive Lubricant		IRLX
Aero guard	Office	IRLX
Air Tool Oil	Scale house	TRLX
Ajax Floor Cleaner	Canteen	TRLX
Ajax Spray & White	Bathroom Canteen	IRLX TRLX CTLX
Alexis Stockmark Fluid X 5		IRLX
All Bull Cattle Paint		TRLX CTLX
Ammoniated Floor Cleaner		IRLX
Active O	Cleaner	CTLX
Anti-Corrosive Structural Primer		IRLX
Anti-Freeze – Ant Boll Coolant	Container	TRLX IRLX CTLX
Auto dish mate	Kitchen	CTLX
BC-9 Cleaner Disinfectant	Scale house	TRLX
Bindi & Clover Weeder (500m)		IRLX
Blackboard Paint		IRLX CTLX
Bleach	Canteen	TRLX CTLX
Brake Fluid	Maintenance Shed	TRLX
Brake water 700	Maintenance Shed	TRLX
Buttress (Selective Herbicide)		IRLX
Cable Lube	Maintenance Shed	TRLX
Busta	Cleaner	CTLX
Cattle marking paint	Paint shed	CTLX

Chemical Register	Location	Site
Castrol GTx2 20w-50 (1 x 2)		IRLX
Cat Pry Film Lubricant		IRLX
Chemwet 100 x 5L		IRLX
Diesel 2 x 44 Gallon drums Low sulphur Highland Diesel Ultra Low Sulfur		IRLX CTLX CTLX CTLX
Diurex (Group C Herbicide)		IRLX
Domestic Cleaner	Cleaning Room	TRLX
Dupont Brush Off (200g)		IRLX
Drain Cleaner (B&G)	Cleaner	CTLX
Dishwashing liquid(Advantage)	Kitchen	CTLX
E. Ezy Glide		IRLX
Effluent Ponds		CTLX TRLX IRLX
Enamel Thinner	Maintenance Shed	TRLX
Eucalyptus Disinfectant	Kitchen cupboard	IRLX
Fence & Gutter Paint		IRLX
Flux Paste - Easyflo	Maintenance Shed	TRLX
Fly Spray 400g	Canteen	TRLX
Flystrike Powder	Kitchen cupboard	IRLX
For Earth BIO (20lx8)	Kitchen cupboard	IRLX
GALMATE – Metal Protector Spray Paint Primer FTW Polymers & fluids		CTLX
Glass & Chrome Cleaner	Scale house	TRLX IRLX
Status Glass Cleaner	Cleaner	CTLX
Grill Cleaner	Canteen	TRLX
Hand Cleaner	Canteen/Scale house/Livestock Office	TRLX
Hydraulic/Hydrostatic Fluid (Bobcat 20L)		IRLX

Chemical Register	Location	Site
Inox Mx3	Maintenance Shed	IRLX TRLX
Jif Bathroom Cream	Bathroom cupboard	IRLX
Kamba M (Herb) 5L	Maintenance Shed	TRLX
Ken – Amine 625 (2L)		IRLX
Ken – Up 450CT (20L)		IRLX
K-San Cleaner	Canteen	TRLX
Lanolin Type A	Work shop	CTLX
Liplex EPZ		IRLX
Lontrel Herbicide (1L)		IRLX
Lubricant Soluble	Workshop	CTLX
Maybond		IRLX
Methylated Spirits	Canteen	IRLX TRLX
Mineral Turpentine	Maintenance Shed	IRLX CTLX TRLX
Multi G – Transmission Oil 3 x 20L	Container	TRLX
Oxide Primer		IRLX
Oven cleaner	Kitchen	CTLX
Paint (Dulux water based)	Paint shed	CTLX
Pineo Cleaner Antibacterial Kitchen Cleaner	Kitchen	CTLX
Power Cleaner/Pineo Clean		IRLX
Power force Window and glass cleaner	Kitchen	CTLX
Protecta Bodyguard 30+ Sunscreen	Managers Office/Livestock Office	IRLX TRLX
Protek Primer Fluid & Cement Fluid		IRLX
Quick Bayt		IRLX
Quikset Concrete		IRLX
Racumin		IRLX

Chemical Register	Location	Site
Raid (Insecticide)		IRLX
Ratsak		IRLX
Roundup 360 Group M (Herbicide active)		CTLX
Rust Buster		IRLX
Rustfighter 215		IRLX
Rustguard Epoxy Enamel	Workshop	CTLX
Rose refresh	Cleaner	CTLX
Silicone Sealant		IRLX
Simple green All Purpose Cleaner		IRLX
Solaguard (Watty) 4LTR	Maintenance Shed	TRLX
Solvent Cement Type P	Maintenance Shed	TRLX
Spinnaker 700 WDG (2KG)		IRLX
Spray paint	Scale House/Livestock Office	TRLX
Strarane Advance (Herb) 1LTR	Maintenance Shed	TRLX
Striker Herbicide (5L)		IRLX
Sugar Soap Cleaner	Canteen	TRLX CTLX
SuperDraulic 46 20L x 2	Container	TRLX
Toilet Cleaner	Bathroom cupboard	IRLX
Ultra Colour Marking Paint		IRLX
Ultra Colour Marking Paint	Maintenance Shed	TRLX
Unleaded 2 Stroke Petrol (1 x 10L)		IRLX
Unleaded Petrol (2x20L) Unleaded 2 Stroke Petrol (1x10L)	Paint Shed Workshop Workshop	IRLX CTLX TRLX CTLX
Uptake Spraying Oil (20L)		IRLX
Versadet	Cleaner	CTLX
WD-40	Maintenance Shed	IRLX TRLX
Weedmaster Duo (Herb) 5L	Maintenance Shed	TRLX
White Lithium grease aerosol	Workshop	CTLX
White board cleaner	Office	CTLX
Window wash	Cleaner	CTLX
Windex	Kitchen	CTLX

CENTRAL TABLELANDS LIVESTOCK EXCHANGE



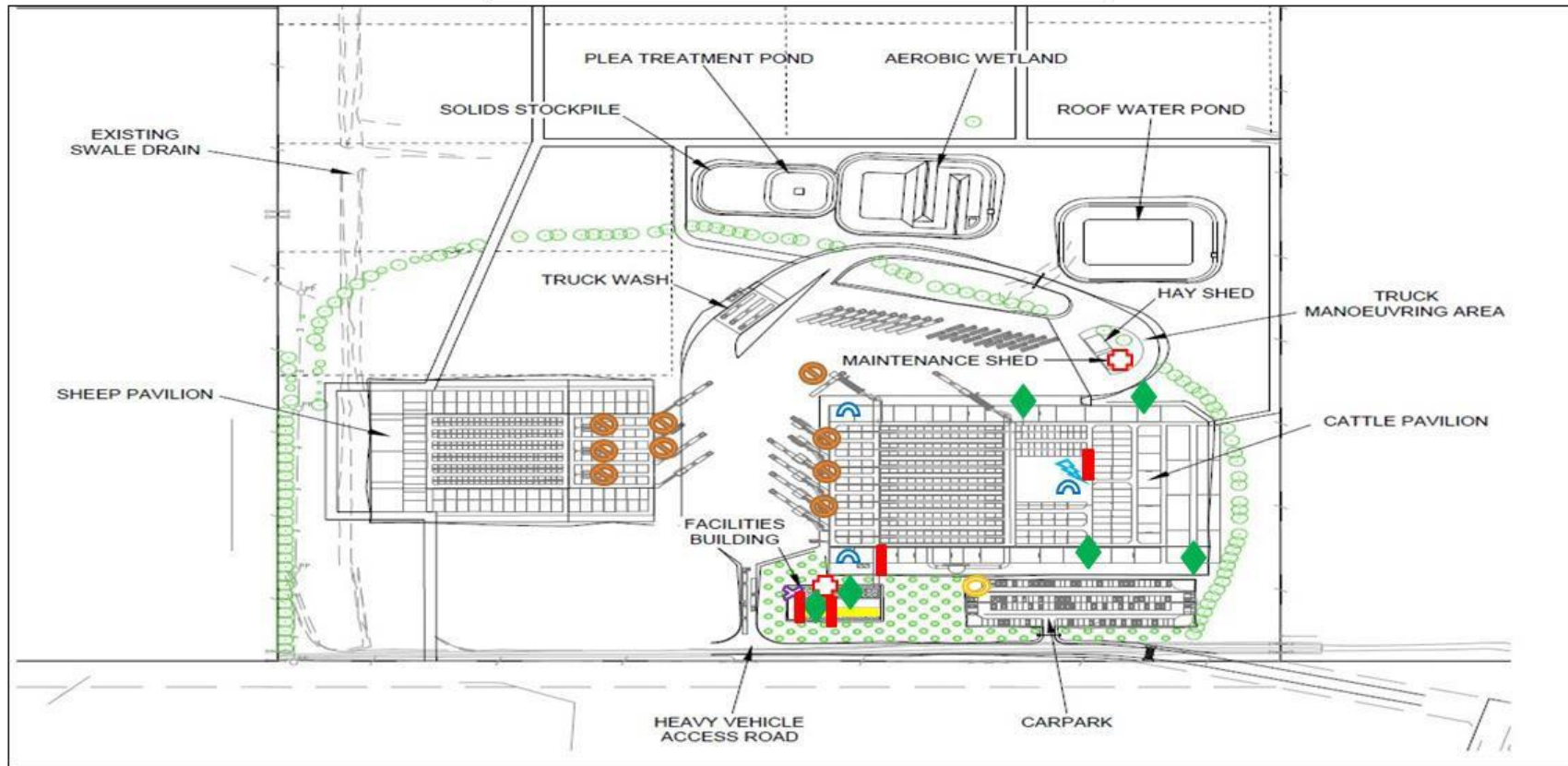
LEGEND:

- First Aid Kit location
- Showers/Toilets
- Assembly Area
- Cattle Crush
- Agents Office
- Compressor
- Fire Hose
- Fire Extinguisher

NOTE:

WHEN YOU HEAR THE WORDS **“EMERGENCY, EMERGENCY, EMERGENCY”** ALL OCCUPANTS **MUST** CEASE ACTIVITIES, MAKE EQUIPMENT AND LIVESTOCK SAFE, MOVE DIRECTLY TO THE ASSEMBLY AREA AND FOLLOW INSTRUCTIONS FROM EITHER THE FIRE WARDEN/POLICE OR SITE MANAGER.

TAMWORTH REGIONAL LIVESTOCK EXCHANGE



LEGEND:

- First Aid Kit location
- Showers/Toilets
- Assembly Area
- Cattle Crush
- Agents Office
- Compressor
- Fire Hose
- Fire Extinguisher
- Water Hose

NOTE: WHEN YOU HEAR THE WORDS **"EMERGENCY, EMERGENCY, EMERGENCY"** ALL OCCUPANTS **MUST** CEASE ACTIVITIES, MAKE EQUIPMENT AND LIVESTOCK SAFE, MOVE DIRECTLY TO THE ASSEMBLY AREA AND FOLLOW INSTRUCTIONS FROM EITHER THE FIRE WARDEN/POLICE OR SITE MANAGER.

INVERELL REGIONAL LIVESTOCK EXCHANGE



LEGEND:

⊕ First Aid Kit location
 ⊗ Showers/Toilets
 ⊙ Assembly Area
 ⊖ Cattle Crush
 □ Agents Office
 ⚡ Compressor
 🔥 Fire Hose
 ■ Fire Extinguisher
 ▲ Bulk Scale

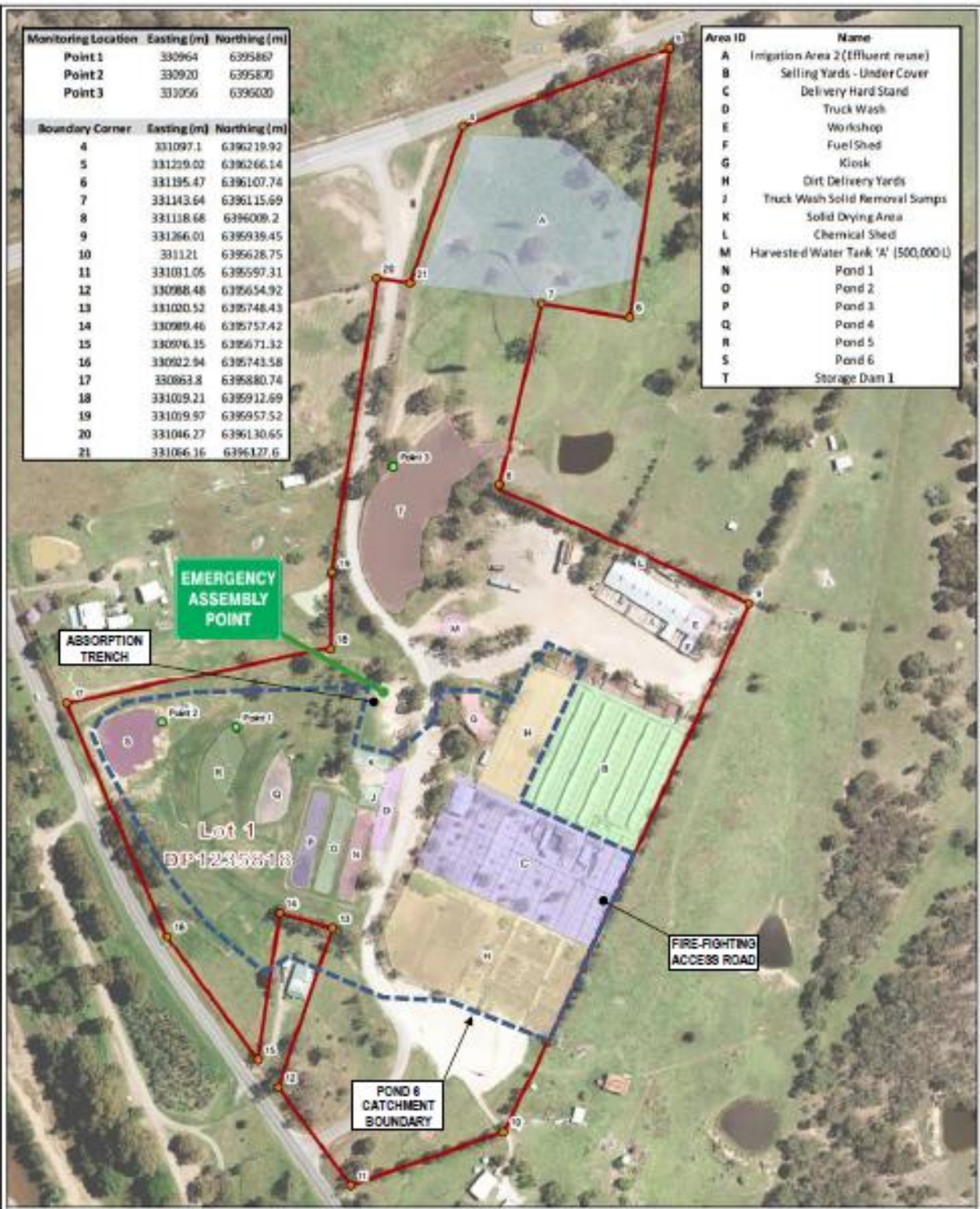
NOTE:

WHEN YOU HEAR THE WORDS "EMERGENCY, EMERGENCY, EMERGENCY" **ALL** OCCUPANTS MUST CEASE ACTIVITIES, MAKE EQUIPMENT AND LIVESTOCK SAFE, MOVE DIRECTLY TO THE ASSEMBLY AREA AND FOLLOW INSTRUCTIONS FROM EITHER THE FIRE WARDEN/POLICE OR SITE MANAGER.

Monitoring Location	Easting (m)	Northing (m)
Point 1	330964	6395867
Point 2	330920	6395870
Point 3	331056	6396000

Boundary Corner	Easting (m)	Northing (m)
4	331097.1	6396219.92
5	331229.02	6396266.14
6	331195.47	6396107.74
7	331143.64	6396115.69
8	331118.68	6396009.2
9	331266.01	6395939.45
10	331121	639628.75
11	331031.05	639597.31
12	330988.48	639654.92
13	331020.52	6395748.43
14	330989.46	6395757.42
15	330976.35	639671.32
16	330922.94	6395743.58
17	330963.8	6395880.74
18	331009.21	6395912.69
19	331009.97	6396957.52
20	331046.27	6396130.65
21	331046.16	6396127.6

Area ID	Name
A	Irrigation Area 2 (Effluent reuse)
B	Selling Yards - Under Cover
C	Delivery Hard Stand
D	Truck Wash
E	Workshop
F	Fuel Shed
G	Kiosk
H	Dirt Delivery Yards
J	Truck Wash Solid Removal Sumps
K	Solid Drying Area
L	Chemical Shed
M	Harvested Water Tank 'A' (500,000L)
N	Pond 1
O	Pond 2
P	Pond 3
Q	Pond 4
R	Pond 5
S	Pond 6
T	Storage Dam 1



Legend

- Boundary Corner
- Monitoring Location
- Property Boundary



HUNTER REGIONAL LIVESTOCK EXCHANGE

Source: Singleton Council PIRMP