



POLLUTION INCIDENT RESPONSE MANAGEMENT PLAN (PIRMP)

INVERELL REGIONAL LIVESTOCK EXCHANGE

ISSUE DATE: SEPTEMBER 2025

Table of Contents

1. PURPOSE	3
2. SCOPE	3
3. DEFINITIONS	3
4. DETAILS	4
5. POLLUTION INCIDENT – PERSON(S) RESPONSIBLE.....	4
6. NOTIFICATION OF RELEVANT AUTHORITIES	5
7. NOTIFICATION OF NEIGHBOURS AND THE LOCAL COMMUNITY	6
8. DESCRIPTION OF LIKELIHOOD OF HAZARDS.....	7
9. RE-EMPTIVE ACTIONS TO BE TAKEN	7
10. INVENTORY OF POLLUTANTS.....	8
11. SAFETY EQUIPMENT	11
12. COMMUNICATING WITH NEIGHBOURS AND THE LOCAL COMMUNITY	11
13. MINIMISING HARM TO PERSONS ON THE PREMISES.....	11
15. ACTIONS TO BE TAKEN DURING OR IMMEDIATELY AFTER A POLLUTION INCIDENT ..	14
16. COORDINATING WITH PERSONS AND AUTHORITIES	15
17. STAFF TRAINING.....	15
18. TESTING AND UPDATING OF THE PIRMP.....	16
 Figure 1 – Premises neighbour notification map.....	 6
Figure 2 – Premises overview.....	12
Figure 3 - Safety and pollution response equipment location.....	13



1. PURPOSE

RLX Operating Company Pty Limited (RLX) holds an Environment Protection Licence with the NSW Environment Protection Authority (EPA) for Inverell Regional Livestock Exchange (IRLX). As per the *Protection of the Environment Operations Act 1997* (the POEO Act), the holder of an Environment Protection Licence must prepare, keep, test and implement a pollution incident response management plan (PIRMP) that complies with Part 5.7A of the POEO Act in relation to the activity to which the licence relates.

If a pollution incident occurs in the course of an activity so that material harm to the environment (within the meaning of section 147 of the POEO Act) is caused or threatened, the person carrying out the activity must immediately implement this plan in relation to the activity required by Part 5.7A of the POEO Act.

A copy of this plan must be kept at the licensed premises, or where the activity takes place in the case of mobile plant licences, and be made available on request by an authorised EPA officer and to any person who is responsible for implementing this plan.

Parts of the plan must also be available either on a publicly accessible website, or if there is no such website, by providing a copy of the plan to any person who makes a written request. The sections of the plan that are required to be publicly available are set out in section 74 of the Protection of the Environment Operations (General) Regulation 2022.

2. SCOPE

This PIRMP covers the IRLX site at 375 Yetman Road, Inverell NSW 2360 which operates under Environmental Protection Licence No. 10802.

3. DEFINITIONS

Pollution incident means an incident or set of circumstances during or as a consequence of which there is or is likely to be a leak, spill or other escape or deposit of a substance, as a result of which pollution has occurred, is occurring or is likely to occur. It includes an incident or set of circumstances in which a substance has been placed or disposed of on premises, but it does not include an incident or set of circumstances involving only the emission of any noise.

A pollution incident is required to be notified if there is a risk of 'material harm to the environment', which is defined in section 147 of the POEO Act as:

- a) Harm to the environment is material if:
 - i. It involves actual or potential harm to the health or safety of human beings or to ecosystems that is not trivial, or
 - ii. It results in actual or potential loss or property damage of an amount in aggregate, exceeding \$10,000 (or such other amount as is prescribed by the regulations), and
- b) Loss, including the reasonable costs and expenses that would be incurred in taking all reasonable and practicable measures to prevent, mitigate or make good harm to the environment.

Notification is required even where 'harm to the environment is caused only in the premises where the pollution incident occurs', as specified in 147(2).

4. DETAILS

ENVIRONMENTAL PROTECTION LICENCE DETAILS

Name of licensee:	RLX Operating Company Pty Limited (ABN: 90 129 963 935)
EPL number:	10802
Premises name and address:	Inverell Regional Livestock Exchange 375 Yetman Road, Inverell NSW 2360
Company or business contact details:	Address: Level 4, Suite 20, 717 Bourke St, Docklands VIC 3008 Phone: 1300 709 919 Email: enquiries@rlx.com.au
Website address:	www.rlx.com.au
Scheduled activity/activities on EPL:	Livestock intensive activities
Fee-based activity/activities on EPL:	Animal accommodation

5. POLLUTION INCIDENT – PERSON(S) RESPONSIBLE

EMERGENCY CONTACTS

PIRMP activation – Primary Contact	Name: Hamish McDonald Position: Business Manager, IRLX Business hours contact number: 0419 901 288 After hours contact number: 0419 901 288 Email: hamish.mcdonald@rlx.com.au
Notifying relevant authorities	Name: Steven Fox Position: Environment & Sustainability Manager Business hours contact number: 0460 368 115 After hours contact number: 0460 368 115 Email: steven.fox@rlx.com.au
Managing response to pollution incidents	Name: Hamish McDonald Position: Business Manager, IRLX Business hours contact number: 0419 901 288 After hours contact number: 0419 901 288 Email: hamish.mcdonald@rlx.com.au

6. NOTIFICATION OF RELEVANT AUTHORITIES

RELEVANT AUTHORITIES	CONTACT NUMBER(S)
EPA NSW	131 555
Fire and Rescue NSW / Rural Fire Service	000*
NSW Health	(02) 9391 9000
SafeWork NSW	131 050
Inverell Shire Council	(02) 6728 8288

- * The 000 number shall be contacted for emergency situations. For non-emergency situations, notification shall be made in writing to firesafety@fire.nsw.gov.au.

7. NOTIFICATION OF NEIGHBOURS AND THE LOCAL COMMUNITY

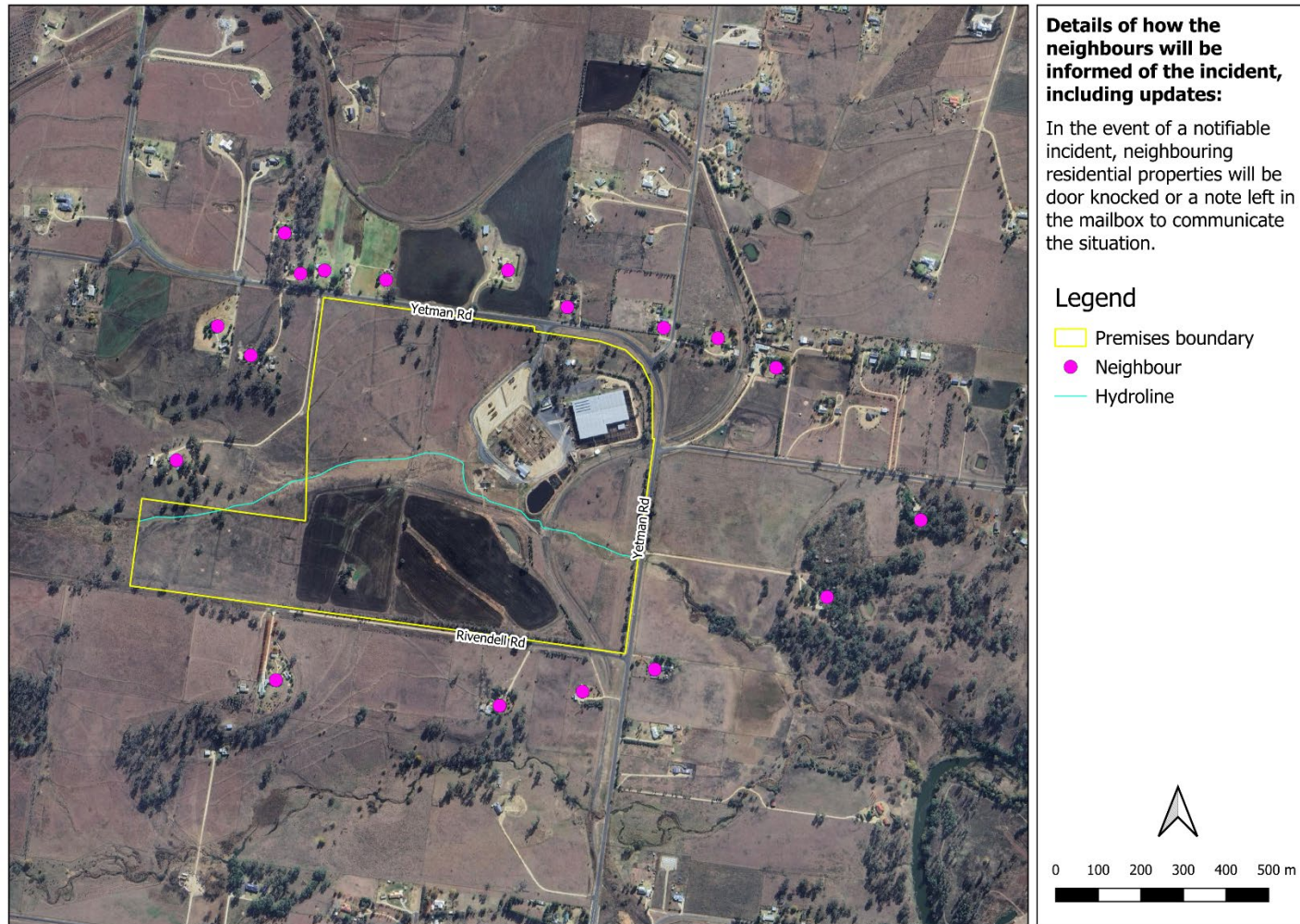


Figure 1 – Premises neighbour notification map

8. DESCRIPTION OF LIKELIHOOD OF HAZARDS

POTENTIAL HAZARD	LIKELIHOOD
Overflow from effluent treatment pond into adjacent unnamed creek	Medium
Surface run off from effluent irrigation to surface waters	Low
Failure to suitably contain manure solid materials	Low
Overflow of truck wash effluent pit into adjacent unnamed creek	Low
Chemical leak of spill contaminating the environment and / or injury to personnel	Low
Fuel leak or spill contaminating the environment and / or injury to personnel	Low
Fire – Grassfire destroying infrastructure and / or injury to personnel	Low
Fire – Combustible hay destroying infrastructure and / or injury to personnel	Low
Fire – Vehicle Fire destroying infrastructure and / or injury to personnel	Low

9. RE-EMPTIVE ACTIONS TO BE TAKEN

Specific pre-emptive actions for the corresponding hazards identified in the earlier section:

- a) Provision of a dedicated chemical storage area with bunding and spill containment kits.
- b) Provision of dedicated fuel storage area with bunding and spill containment kits.
- c) The property boundary fence to be kept mown and clear of debris (where practicable).
- d) Regular monitoring of stored hay / fodder for heat.
- e) Ensure the kitchen has sufficient appropriate fire extinguisher and fire blanket.
- f) Ensure fire extinguishers are located at strategic points within the site.
- g) Ensure screened solids is appropriately managed in accordance with the solids management procedure.
- h) Regular monitoring of effluent treatment system in accordance with the effluent management procedure.
- i) Effluent irrigation to be performed in accordance with the effluent management procedure.
- j) Quarterly sampling in accordance with Environmental Protection Licence requirements.

In general:

- c) Staff induction prior to or at commencement of employment
- d) Regular staff meetings
- e) Use of Safety Data Sheets (SDS) information
- f) Saleyard advisory meetings
- g) Annual internal environmental compliance audit

10. INVENTORY OF POLLUTANTS

POLLUTANT	TYPE	MAXIMUM QUANTITY	LOCATION
MX3 Lubricant	Lubricant	5 Litres	Chemical store
Thinners	Flammable liquid	1 Litres	Chemical store
Water Main lubricant	Lubricant	500 grams	Chemical store
1B 1850 Loctite	Adhesive	500 grams	Chemical store
Rust buster	Liquid	1 Litre	Chemical store
Sunproof	Paint	1 Litre	Chemical store
PVC Priming fluid	Solvent	250 millilitres	Chemical store
PVC Cement	Glue	250 millilitres	Chemical store
Petrol Sys Cleaner	Additive	375 millilitres	Chemical store
Multi Grease	Grease	450 grams	Chemical store
Mineral Turpentine	Flammable liquid	1 Litre	Chemical store
Bulk Diesel	Combustible liquid	600 Litres	Hay Shed
Unleaded petrol	Flammable liquid	60 Litres	Hay Shed
Methylated Spirits	Flammable liquid	4 Litres	Chemical store
68 Hydro Oil	Oil	20 Litres	Chemical store
Degreaser	Degreaser	20 Litres	Chemical store
Chain Oil	Oil	1 Litre	Chemical store

POLLUTANT	TYPE	MAXIMUM QUANTITY	LOCATION
Air Cooled 2 Stroke Oil	Oil	4 Litres	Chemical store
2 Stroke oil	Oil	1 Litre	Chemical store
Lower30		6 Litres	Chemical store
Heavy Duty Coolant	Coolant	20 Litres	Chemical store
PYXL HD Coolant	Coolant	20 Litres	Chemical store
Tricloyr 600	Herbicide	5 Litres	Chemical store
Ken-Zon	Herbicide	5 Litres	Chemical store
Lontrel ADV	Herbicide	5 Litres	Chemical store
Cutlass 500	Herbicide	10 Litres	Chemical store
Le-mat Insecticide	Insecticide	10 Litres	Chemical store
Kamba M	Herbicide	20 Litres	Chemical store
Genwet 1000	Wetting agent	20 Litres	Chemical store
Uptake Sprayoil	Spraying oil	20 Litres	Chemical store
SP700 Sunfactant	Surfactant	20 Litres	Chemical store
MSO-Ieci-Tech	Methylated seed oil	20 Litres	Chemical store
Zulu XT	Herbicide	20 Litres	Chemical store
Haloxypop	Herbicide	5 Litres	Chemical store
Tribal	Herbicide	1 Litre	Chemical store

POLLUTANT	TYPE	MAXIMUM QUANTITY	LOCATION
Bindii/Clover	Herbicide	500 millilitres	
Paradigm	Herbicide	400 grams	
Broadstick	Herbicide	500 grams	
Cadence	Herbicide	5 Kilograms	
Ammonium sulphate	Fertiliser	20 Kilograms	
ICE 600 Mepa		20 Litres	
Flotilla®	Herbicide	20 Litres	
Panzer 450	Herbicide	20 Litres	

11. SAFETY EQUIPMENT

Safety equipment provided on the site includes:

- Spill kits
- Fire extinguishers
- Fire blankets
- First aid equipment
- SDS's to be kept in the maintenance and administration office
- Dangerous goods manifest to be kept in the maintenance shed and administration building, where required.
- PPE to be available in the maintenance shed and administration building

12. COMMUNICATING WITH NEIGHBOURS AND THE LOCAL COMMUNITY

The nature and type of potential pollutant incidents for this site are limited, however if an environmental incident on site is likely to impact neighbouring businesses or the local community, surrounding neighbours will usually be contacted either by phone, SMS, email, door knocking or through information left at the place of residence by a IRLX representative to notify them of a situation.

Communication methods will be used on a case-by-case basis, but in all situations, IRLX will attempt to notify those neighbours likely to be directly affected as soon as possible.

Ongoing communications with the neighbouring businesses/residents will be maintained until such time as the incident is rectified.

The location of immediate neighbours is shown in Figure 1.

13. MINIMISING HARM TO PERSONS ON THE PREMISES

Should a pollution incident occur, it must be immediately reported to the Business Manager (or delegate) who will assess the incident and the likely impact on persons on the premises. If appropriate, the Business Manager (or delegate) shall initiate a site evacuation utilising the public address system.

14. MAPS

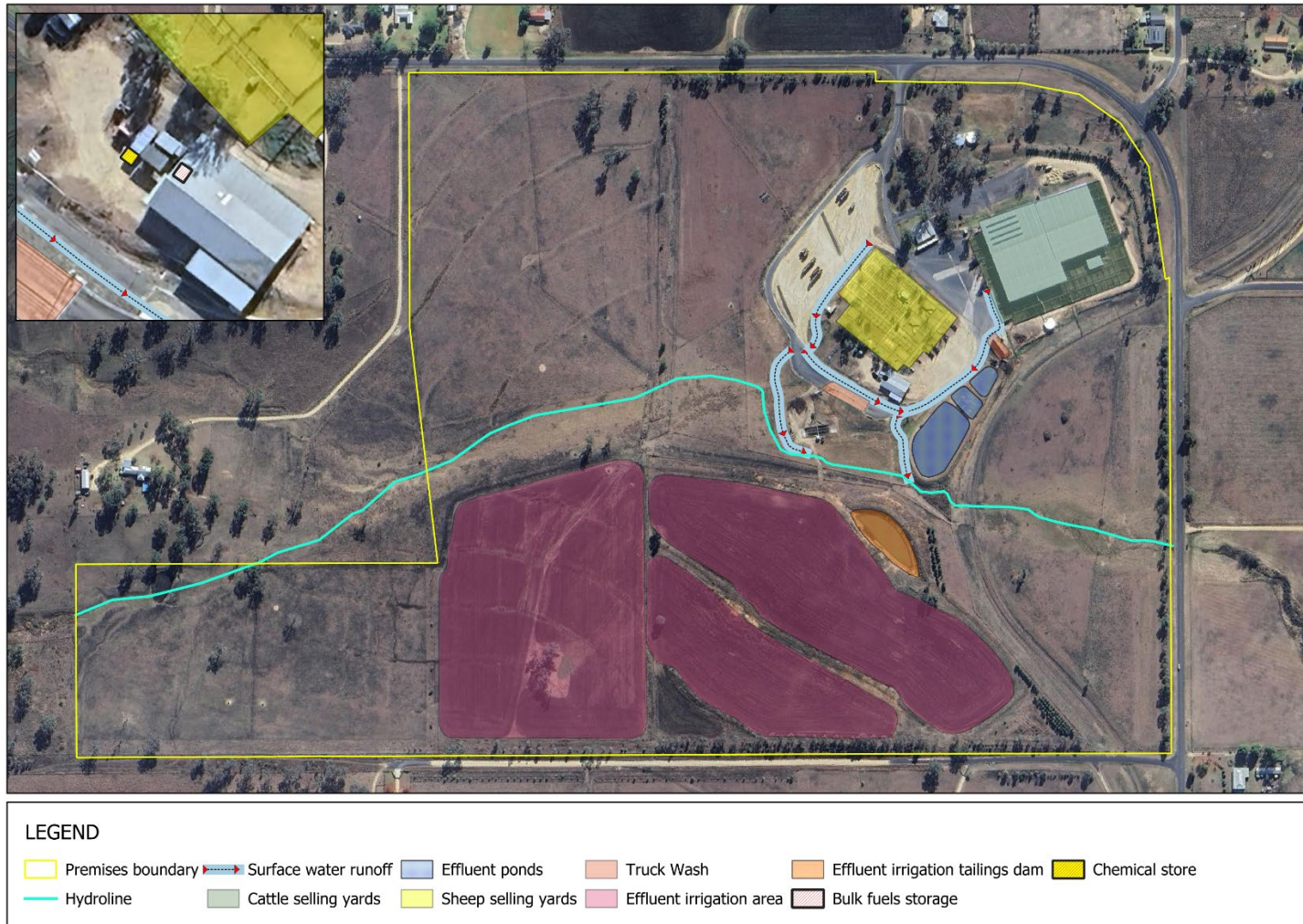
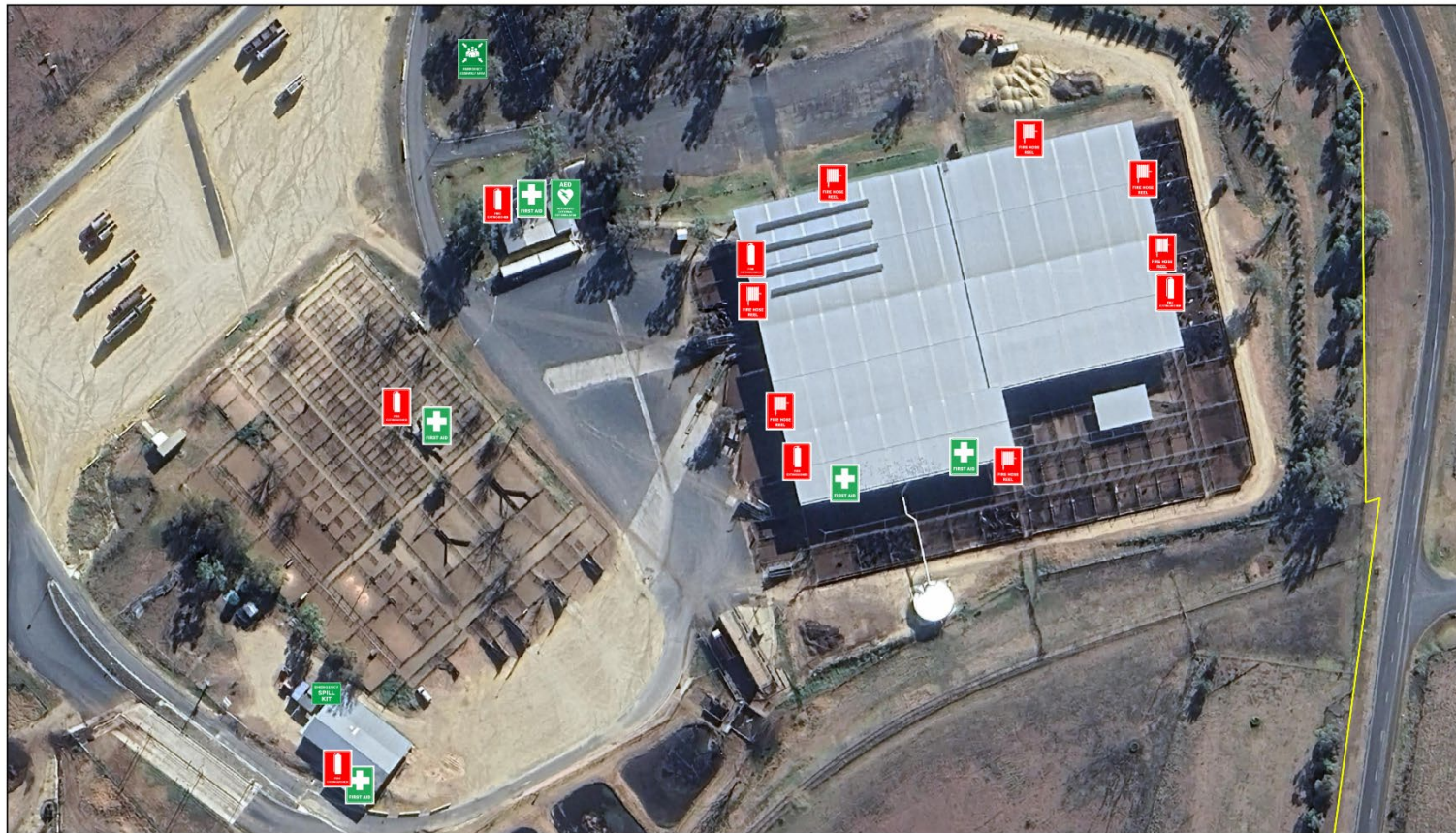





Figure 2 – Premises overview



LEGEND

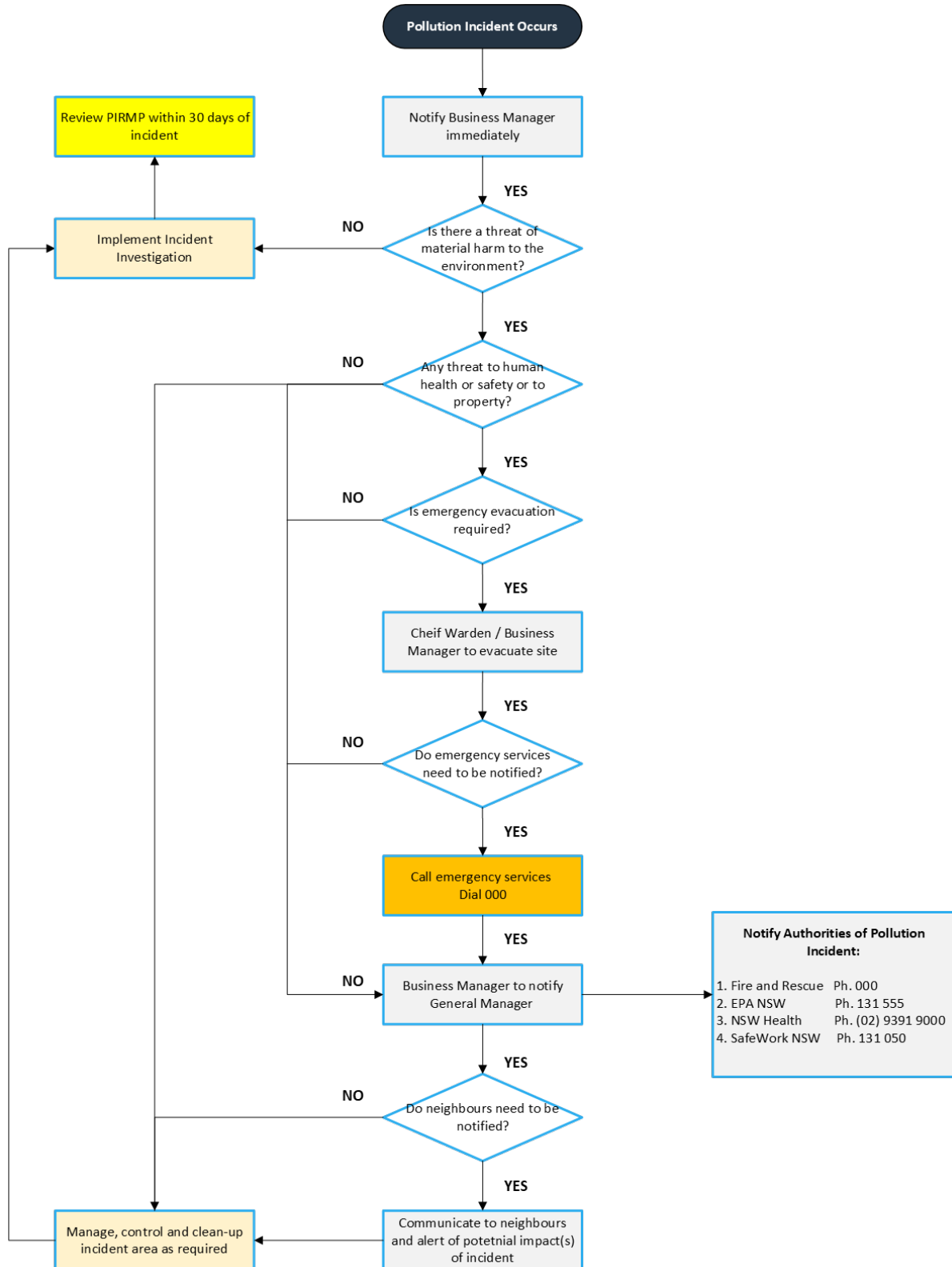
	Premises boundary		Automated External Defibrillator		Spill Kit		Fire Extinguisher
	Emergency Assembly Point		First Aid Kit		Fire Hose		

NOTE:

When you hear the words "EMERGENCY, EMERGENCY, EMERGENCY" ALL occupants must cease activities, make equipment and livestock safe, move directly to the assembly area and follow instructions from the Fire Warden, Police or Business Manager

Figure 3 - Safety and pollution response equipment location

15. ACTIONS TO BE TAKEN DURING OR IMMEDIATELY AFTER A POLLUTION INCIDENT



16. COORDINATING WITH PERSONS AND AUTHORITIES

All staff must notify the Business Manager, immediately after the person becomes aware of a pollution incident. The Business Manager will notify the General Manager in accordance with the RLX Hazard and Incident Reporting Procedure.

If the pollution incident presents a risk of 'material harm to the environment' the General Manager (or delegate) will immediately notify the relevant Authorities after being notified or otherwise becoming aware of the pollution incident.

The following information shall also be provided to the relevant Authorities:

- a) The time, date, nature, duration and location of the incident,
- b) The location of the place where pollution is occurring or is likely to occur,
- c) The nature, the estimated quantity or volume and the concentration of any pollutants involved, if known,
- d) The circumstances in which the incident occurred (including the cause of the incident, if known),
- e) The action taken or proposed to be taken to deal with the incident and any resulting pollution or threatened pollution, if known,
- f) Other information prescribed by the regulations.

17. STAFF TRAINING

All staff affected by the content of this document will receive instruction or explanation on the relevant sections or requirements of the document.



18. TESTING AND UPDATING OF THE PIRMP

The PIRMP shall be tested once every 12 months and within one month of any pollution incident occurring. The objective of testing is to assess whether the information included in the PIRMP is accurate, current and is capable of being implemented in a workable and effective manner.

The routine testing will be performed as a desktop exercise and the name of the person(s) carrying out the test will be recorded in the PIRMP test report below. If the PIRMP is updated the date and details on amendments to the plan shall also be recorded.

PIRMP TEST RECORD			
DATE	PERSONNEL INVOLVED	ASPECTS TESTED	TEST FINDINGS
PIRMP DOCUMENT REVIEW RECORD			
REVIEW DATE	DETAILS		AUTHOR
17/07/2023	Revision of key contacts		Cameron Clode
16/06/2024	Update contacts		Steven Fox
23/09/2025	Complete document rewrite including contacts, maps and pollutant inventory		Steven Fox



APPROVER LIST

NAME	POSITION	APPROVAL / REVIEW DATE
Hamish McDonald	Business Manager- IRLX	23/09/2025